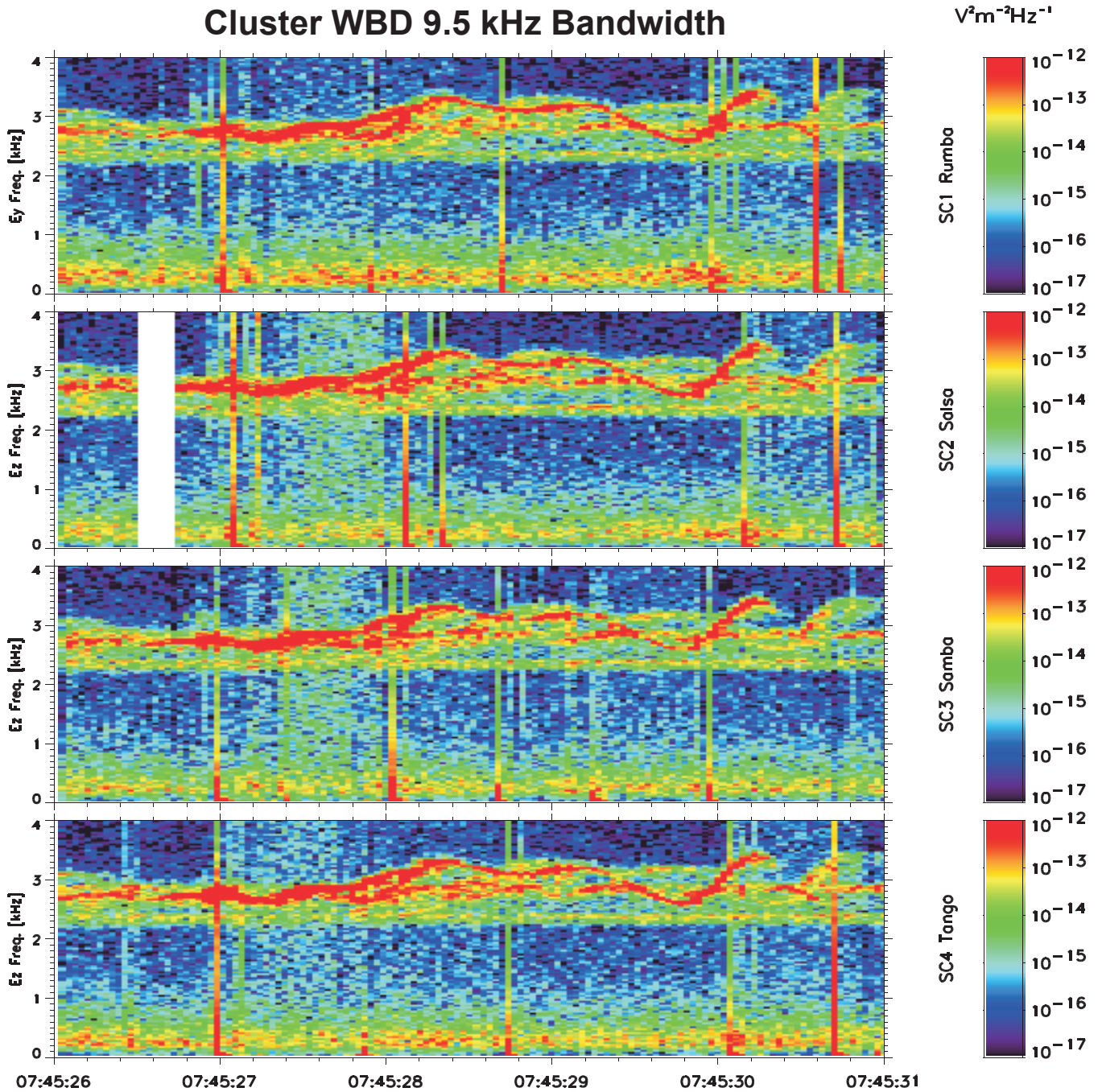


- *2.5 - 3.5 kHz fine-structured triggered emissions observed on all spacecraft for ~5 seconds*
- *Triggered emissions appear nearly sinusoidal across the event interval*

### Cluster WBD 9.5 kHz Bandwidth

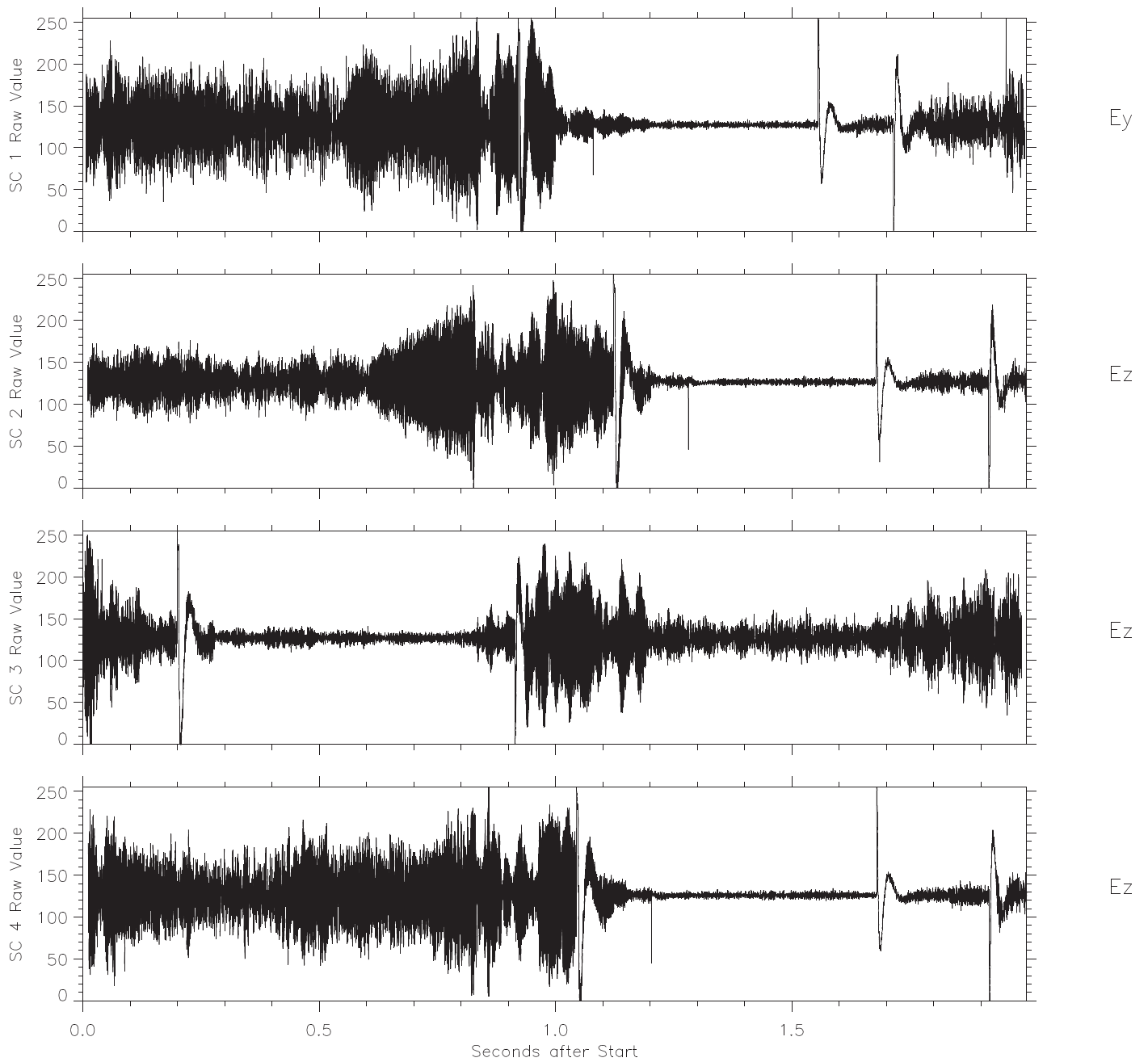


$R_E$	4.37	4.37	4.38	4.38	4.38	4.38
$\lambda_m$	19.30	19.31	19.32	19.33	19.34	19.35
MLT	23.34	23.34	23.34	23.34	23.34	23.34
L	4.90	4.90	4.90	4.90	4.90	4.90

UT\_OBT: 2002-03-11T07:45:26 to 2002-03-11T07:45:31

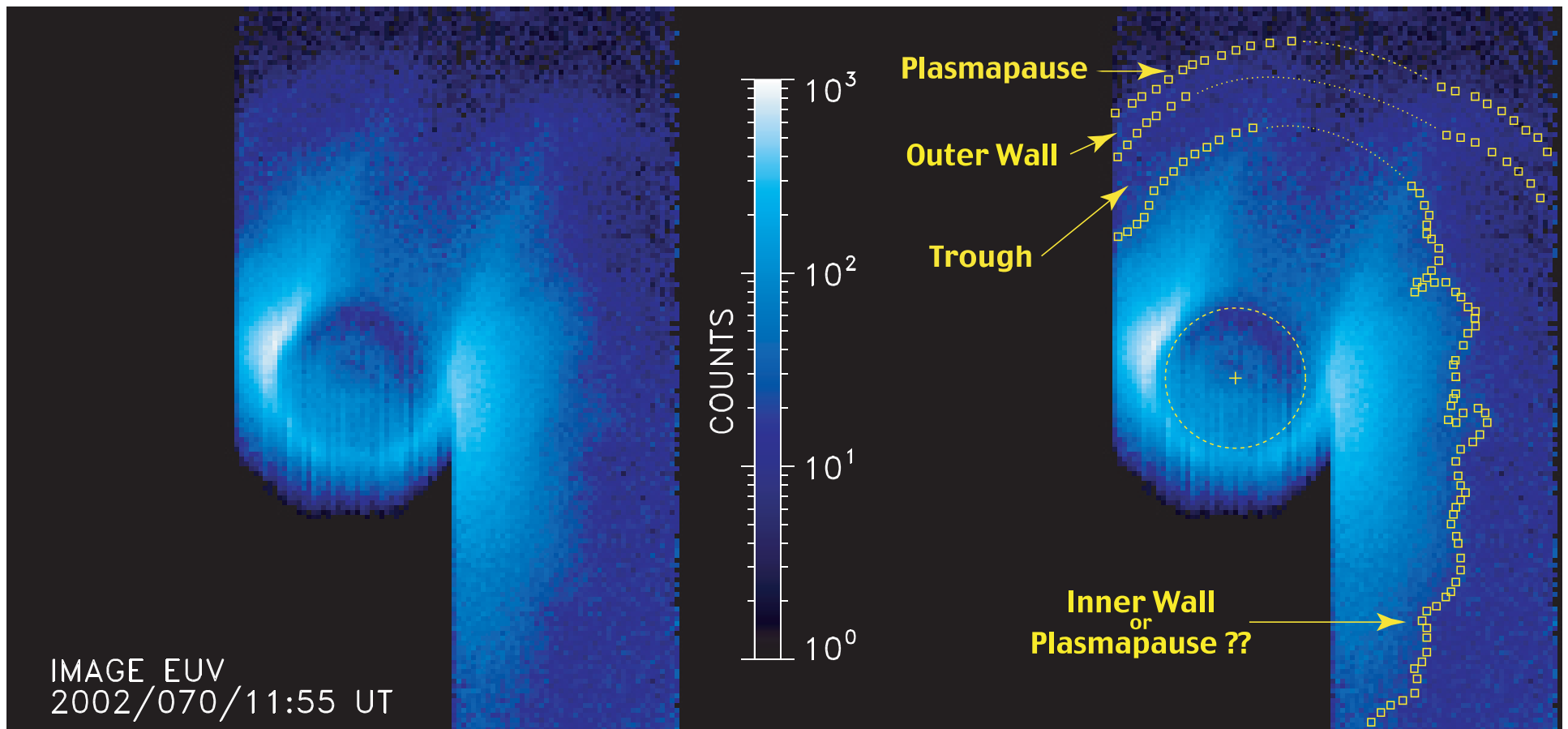
- *Waveform of final 2 seconds of preceding spectrogram*
- *Note pairs of oppositely-directed pulses*

### Cluster WBD Waveform

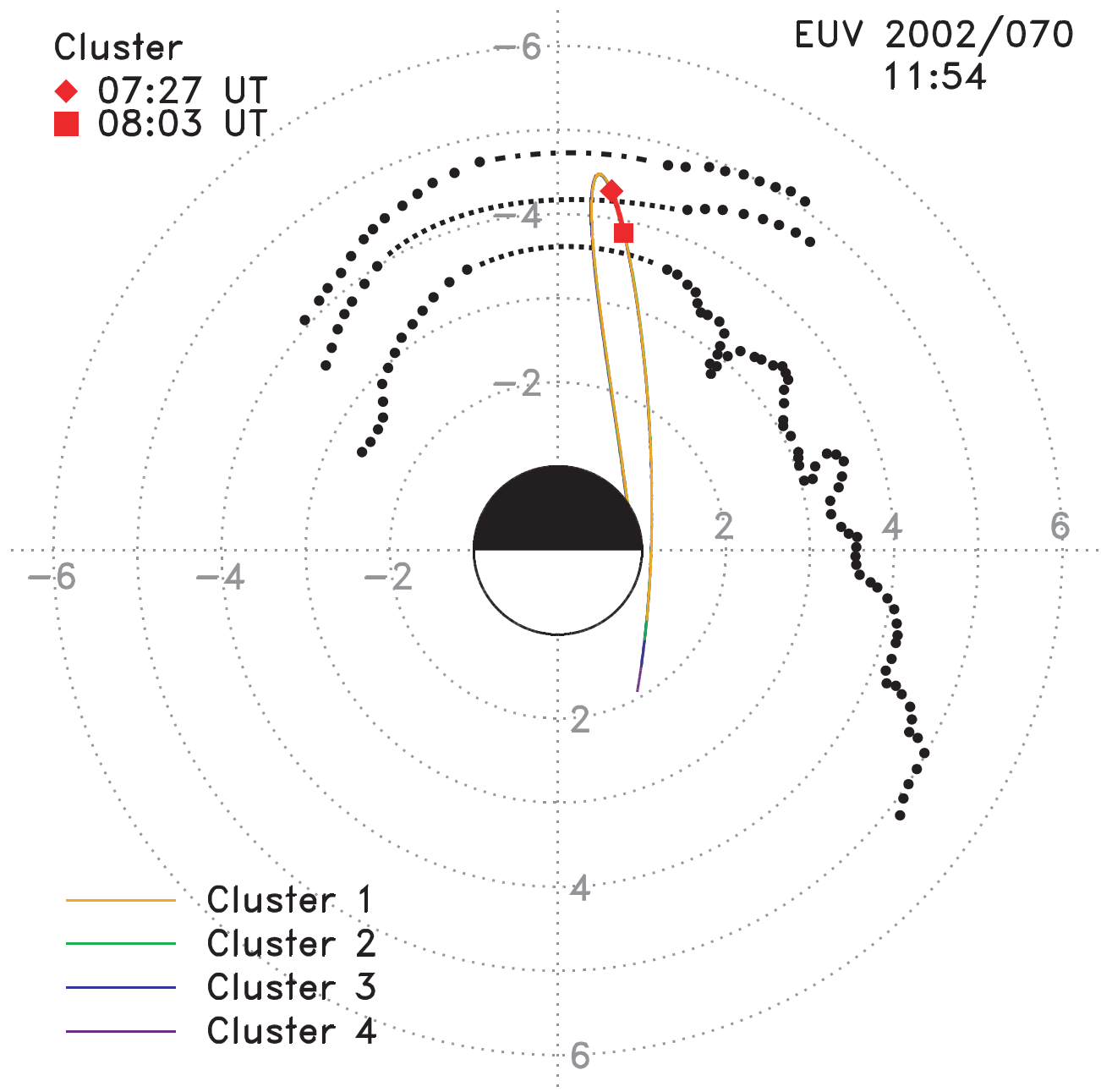


UT\_OBT: 2002-03-11T07:45:29.014

- *IMAGE EUV image of plasmasphere at approximately the time of the Cluster triggered emissions*
- *Note the presence of a trough with sharp cutoff at the inner wall*

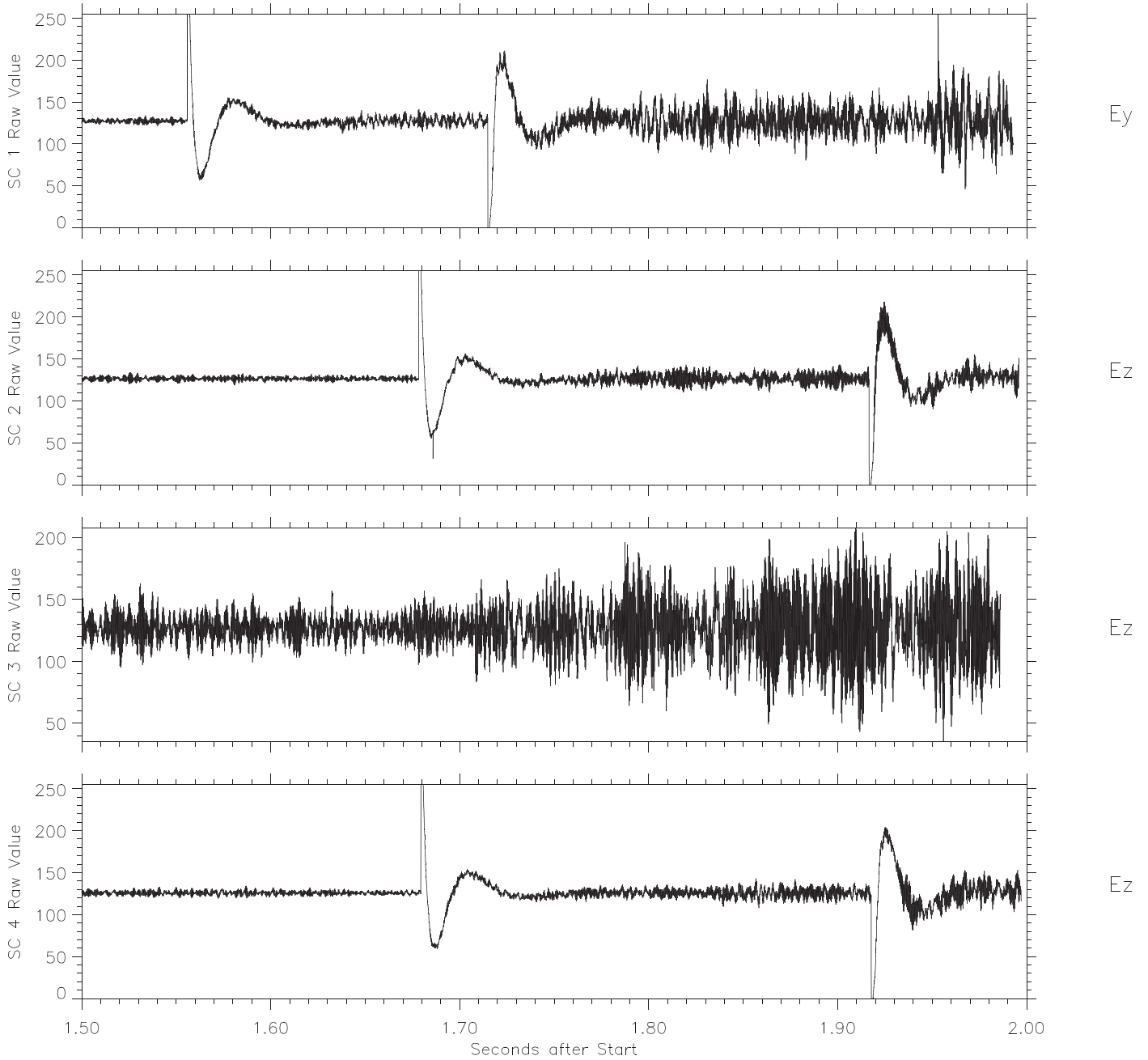


- ***IMAGE EUV analysis of plasmopause and trough in SM equatorial plane, and Cluster's predicted locations***



- *Higher time resolution plot of pulses*

### Cluster WBD Waveform



UT\_OBT: 2002-03-11T07:45:29.014